



MASP
WELCOME

MASP, a diverse, inclusive, and plural museum, has the mission to establish, in a critical and creative way, dialogues between past and present, cultures and territories, through the visual arts. To this end, it should enlarge, conserve, research and disseminate its collection, while also promoting the encounter between its various publics and art through transformative and welcoming experiences.

Avenida Paulista, 1578
São Paulo, SP, Brazil
Trianon-MASP
Subway Station

FOLLOW MASP

MASP
MASPMUSEU
MASPMUSEU
MASPMUSEU

QUESTIONS AND SUGGESTIONS, WRITE TO:

atendimento@masp.org.br

MUSEU DE ARTE DE SÃO PAULO ASSIS CHATEAUBRIAND

MASP

ABOUT MASP

The Museu de Arte de São Paulo Assis Chateaubriand (MASP), the first modern museum in Brazil, is a private, not-for-profit institution founded by Brazilian businessman Assis Chateaubriand in 1947, who invited the Italian art dealer and critic Pietro Maria Bardi to serve as MASP's director, a position he held from 1947 to 1990. Acquired through donations from the local society, MASP's first artworks were selected by Bardi and became the most important collection of European art in the Southern Hemisphere. Today, the collection gathers more than 11 thousand artworks, including paintings, sculptures, objects, photographs, and costumes from a wide range of periods, encompassing art from Europe, Africa, Asia, and the Americas.

In addition to the long-term exhibition of its collection, MASP also organizes a comprehensive program of temporary exhibitions, courses, lectures, as well as musical, dance, and theater presentations.

Originally located on 7 de Abril street, in São Paulo's downtown district, the museum was transferred to its current building on Avenida Paulista in 1968; its striking architectural design by Lina Bo Bardi has made it a landmark of twentieth-century architecture. Lina Bo Bardi used glass and concrete to create an architecture of rough surfaces without luxurious finishing but that conveys a sense of lightness, transparency, and suspension. The plaza underneath the

building, known as "free span", was designed to serve as a public square. The architect's radicality can also be appreciated in the iconic crystal easels she designed for displaying the museum's collection on the building's second floor. By removing the artworks from the wall, the easels serve as a way to question the traditional model of European museums.

In 2025 the MASP will gain an additional building in the block adjacent to the current one on Paulista Avenue. Both will be connected by an underground tunnel. The construction will expand the museum's area by 6.945 m², the 14 floors will feature galleries, classrooms, restoration laboratory, restaurant, shop, and event areas, enhancing the visitor's experience.

MASP HOURS

Tuesday - free admission **10AM-8PM**
Wednesday to Sunday **10AM-6PM**
CLOSED ON MONDAYS
* Entry to the museum, store, and café allowed up to 1 hour before closing

FREE ADMISSION

MASP Friends
Children aged 10 and under with ID
Visitors with disabilities and a companion

FREE ADMISSION B3

Every first Thursday of the month

GRATUITOUS PROGRAM

Groups from public institutions, third sector organizations, social projects and programs must book in advance: masp.org.br/en/gratuity

MASP STORE

Tuesday **10AM-8PM**
Wednesday to Sunday **10AM-6PM**
CLOSED ON MONDAYS
+55 11 3149 5868
loja@masp.org.br

MASP CAFÉ

Tuesday **10AM-7:45PM**
Wednesday to Sunday **10AM-5:45PM**
CLOSED ON MONDAYS

MASP EVENTS

eventos@masp.org.br
cultural@masp.org.br

RESTAURANT MASP A BAIANEIRA

Tuesday to Friday **11:30AM-3PM**
Saturday **11:30AM-4PM**
Sunday **11:30AM-4PM**
CLOSED ON MONDAYS
Reservations: +55 11 91107 4074

MASP MEDIATION AND PUBLIC PROGRAMS

Free lectures, seminars, teacher training, workshops, and accessibility features
masp.org.br/en/mediation

MASP SCHOOL

Free theoretical courses about art and culture
masp.org.br/en/masp-school

MASP RESEARCH CENTRE

By appointment only
Monday to Friday **1PM-6PM**
centrodepesquisa@masp.org.br



Benefits program with unlimited entry, no queues and special discounts

DISCOUNTS:

20% **MASP STORE**
*non cumulative discount
15% **MASP SCHOOL**
10% **RESTAURANT MASP A BAIANEIRA AND OTHER CULTURAL INSTITUTIONS**

LEARN MORE ABOUT THE PROGRAM AND JOIN BY USING THE QR CODE



MORE INFORMATION
amigo@masp.org.br



Strategic Partnership



Production

MINISTÉRIO DA CULTURA

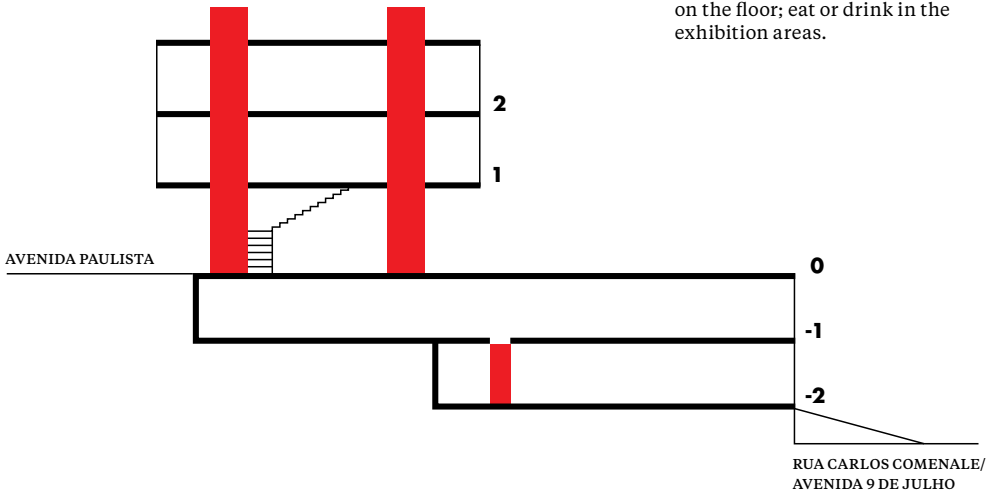


IMAGE: Crystal-easel display installed in the MASP's picture gallery, 2nd floor, 2023
Photo: Eduardo Ortega

You may access the museum's several floors using either the steps or the elevators.

Photography without flash only.

Please do not: touch the artworks; go beyond the security line on the floor; eat or drink in the exhibition areas.



2

SECOND FLOOR

LONG-TERM EXHIBITION
PICTURE GALLERY IN TRANSFORMATION
[GALLERY]

RESTING BENCHES

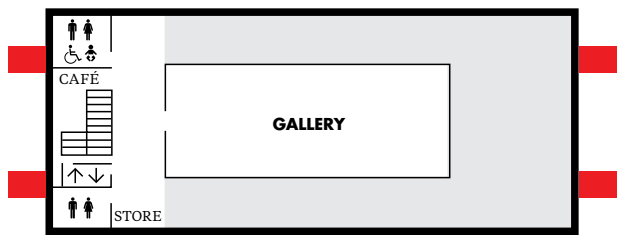


1

FIRST FLOOR

TEMPORARY EXHIBITIONS [GALLERY]

MASP CAFÉ
RESTING BENCHES
WC ♀♂♿
BABY CARE ROOM ♀
MASP STORE



0

GROUND FLOOR

ENTRANCE AND EXIT
TICKET OFFICE
COAT CHECK

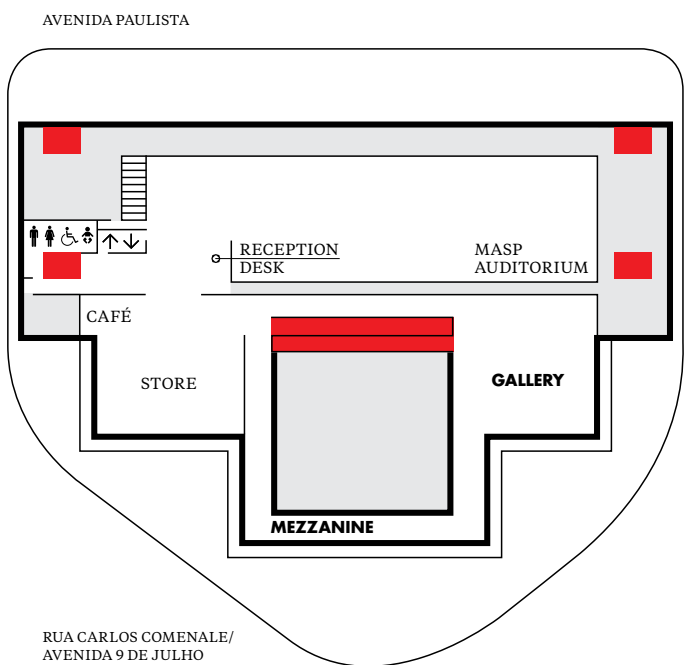
-1

FIRST BASEMENT

RECEPTION DESK
MASP AUDITORIUM
WATER FOUNTAIN
MASP CAFÉ

TEMPORARY EXHIBITIONS
[GALLERY AND MEZZANINE]

MASP STORE
RESTING BENCHES
WC ♀♂♿
BABY CARE ROOM ♀



-2

SECOND BASEMENT

TEMPORARY EXHIBITIONS
[VIDEO ROOM AND GALLERY]

RESEARCH CENTRE
DISPLAYS
RESTAURANT **MASP**
A BAIANEIRA
RESTING BENCHES
WATER FOUNTAIN
WC ♀♂♿
BABY CARE ROOM ♀

